



DBA INTERIORS®
THE PROFESSIONAL ID CONTRACTOR

COMPANY PROFILE

CONTENT

ABOUT US
04-07

OFFICE
08-69

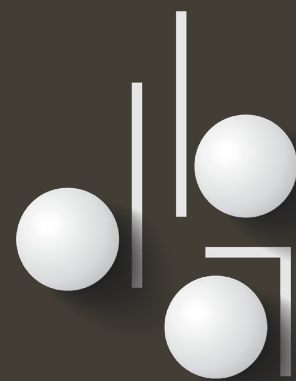
RESIDENTIAL & HOSPITALITY
70-113

RETAIL
114-145

OUR BELOVED
146-153



ABOUT US



We are known for our highly invested and detailed approach to manage the finishing work of large-scale and prestigious projects, understanding the needs and viewpoints of your business to deliver a truly innovative design and build solutions for your place. Our project management structure pre-empts potential delays, and carefully plans the workflow and procurement process in advance, ensuring your vision is delivered to meet your expectations – on time and on budget. We are committed to forging long-term partnerships with our clients, creating robust, and flexible solutions addressing the changing needs of your business' future.

We take care of all of your headaches – which means you just get to focus on your business. Our teams are fully qualified professionals with extensive experience and design expertise. We stick with you – with the same team from beginning to the end of your project and one of our Directors is permanently responsible for your project. We manage with professionalism and integrity, and the importance of creative design – is at the HEART of what we do.



THE SIMPLE 3 STAGE APPROACH

We have a simple 3 stage approach to all our projects.

1. We discuss and agree with your requirements. One of our Directors is assigned to your project from the beginning to completion.
2. Our experienced Design Team will guide you through the design process, from initial ideas to the realization of your new workspace.
3. Our Project Managers become a part of your team. They prepare your program of works along with detailed cost management. Detailed project progress reports are prepared weekly. You can call a meeting whenever you want to discuss the progress of your project.

AFTERCARE

When your project ends, our relationship continues still. Whether you are requiring additional space due to planned or unexpected growth, or relocating and downsizing, we are there to help you through these transitions. We have a designated team available 24/7 to undertake fit out and refurbishment within your existing office space. We retain all your project documentation and user manuals so we know how your office works and what will work in accordance with your lease.

We offer the 3 main services:

1. DESIGN & BUILD
2. PROJECT MANAGEMENT
3. AFTER CARE

DBA Interiors helps you enhance your projects with innovative design solutions, creativity, and management expertise by a fully integrated process, which is controlled and managed to a high degree, ensuring reliable lead times, accurate quoting processes and a strong integration with other specialists and contractors on site. This is how we take a holistic approach to the process of delivering your project so you can get on thriving your business.



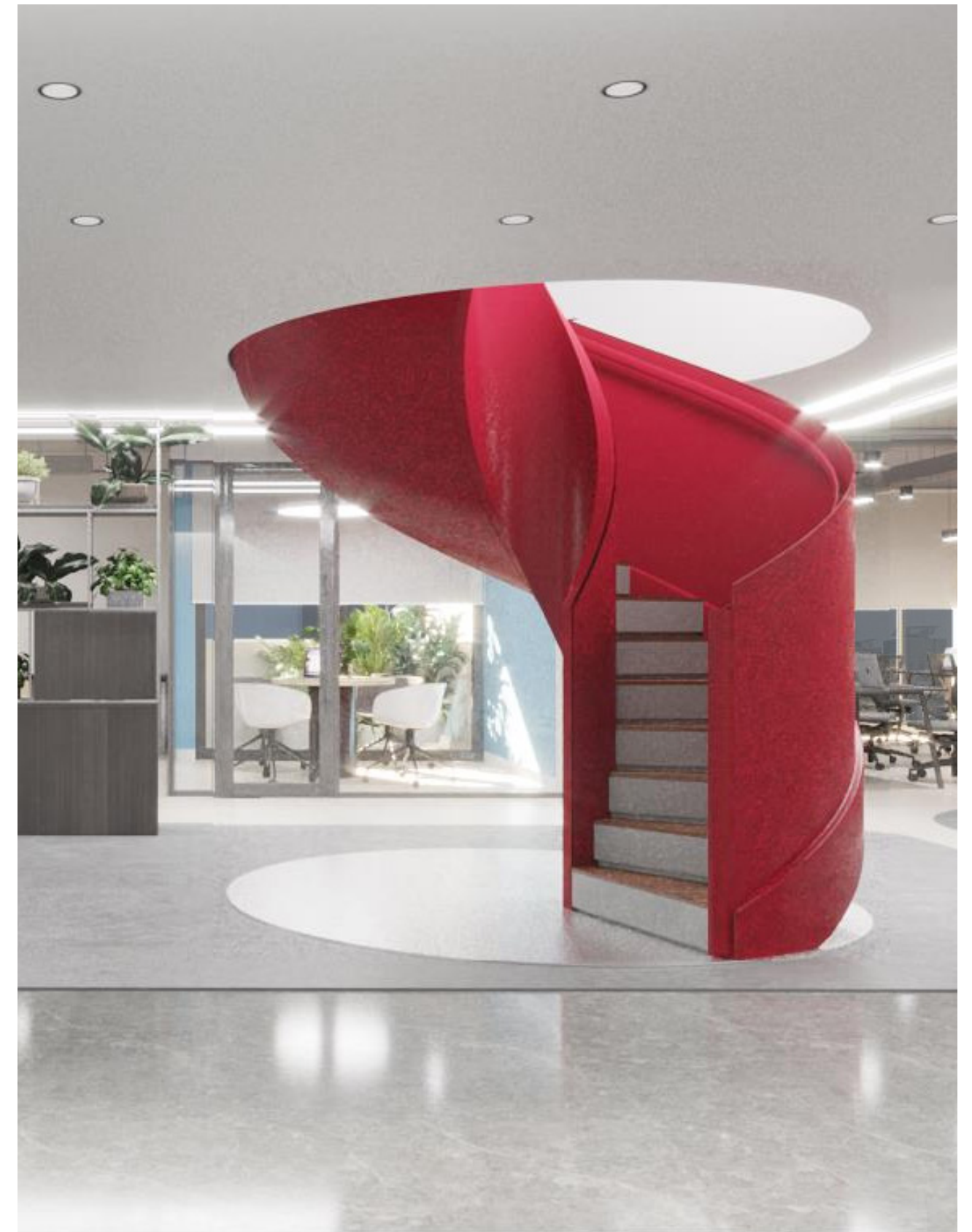
OFFICE

THIEN HUONG OFFICE

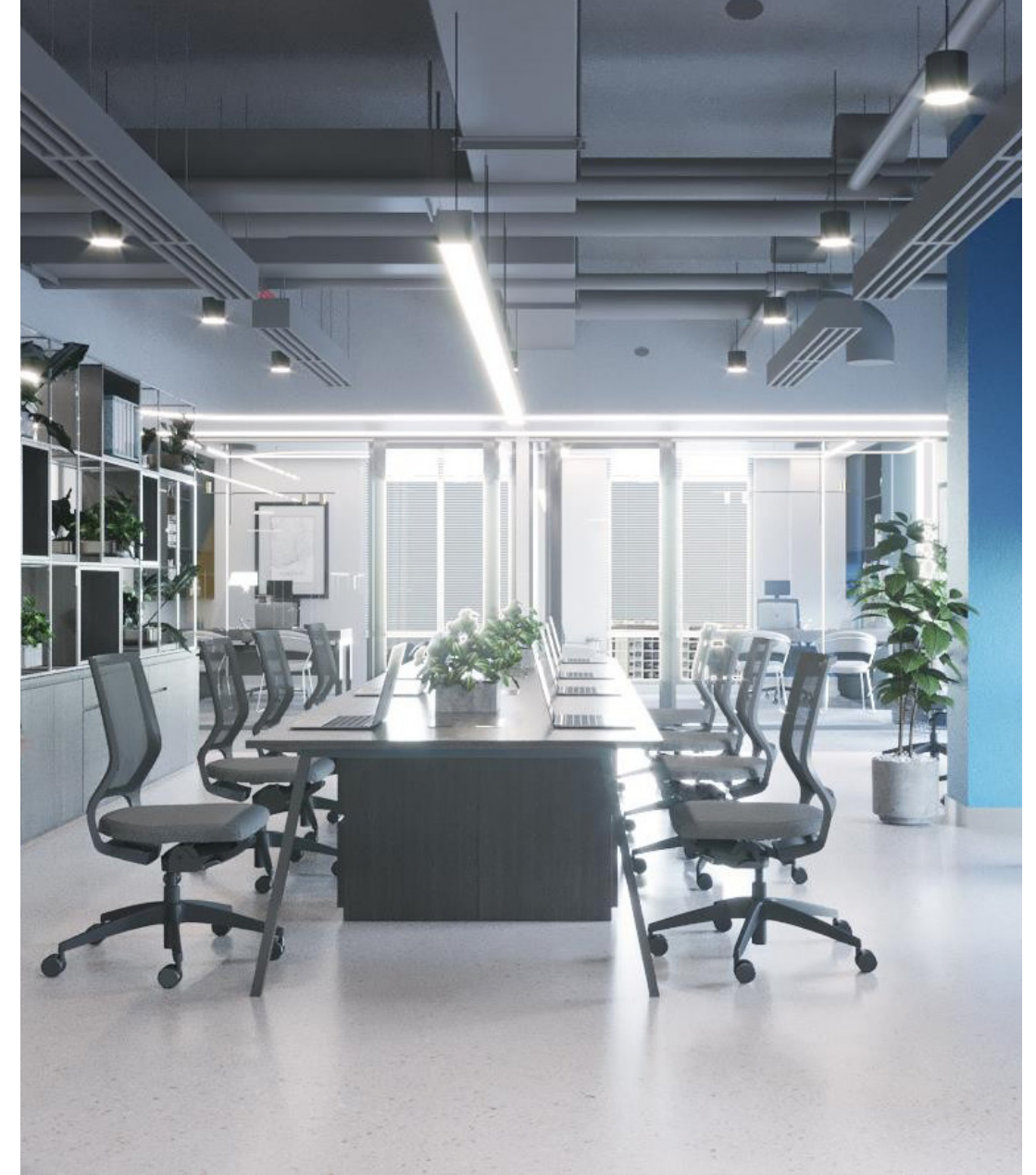
Scope of Work: Design & Build
Client: Thien Huong Corporation
Location: Ho Chi Minh City
Completion Date: 2021

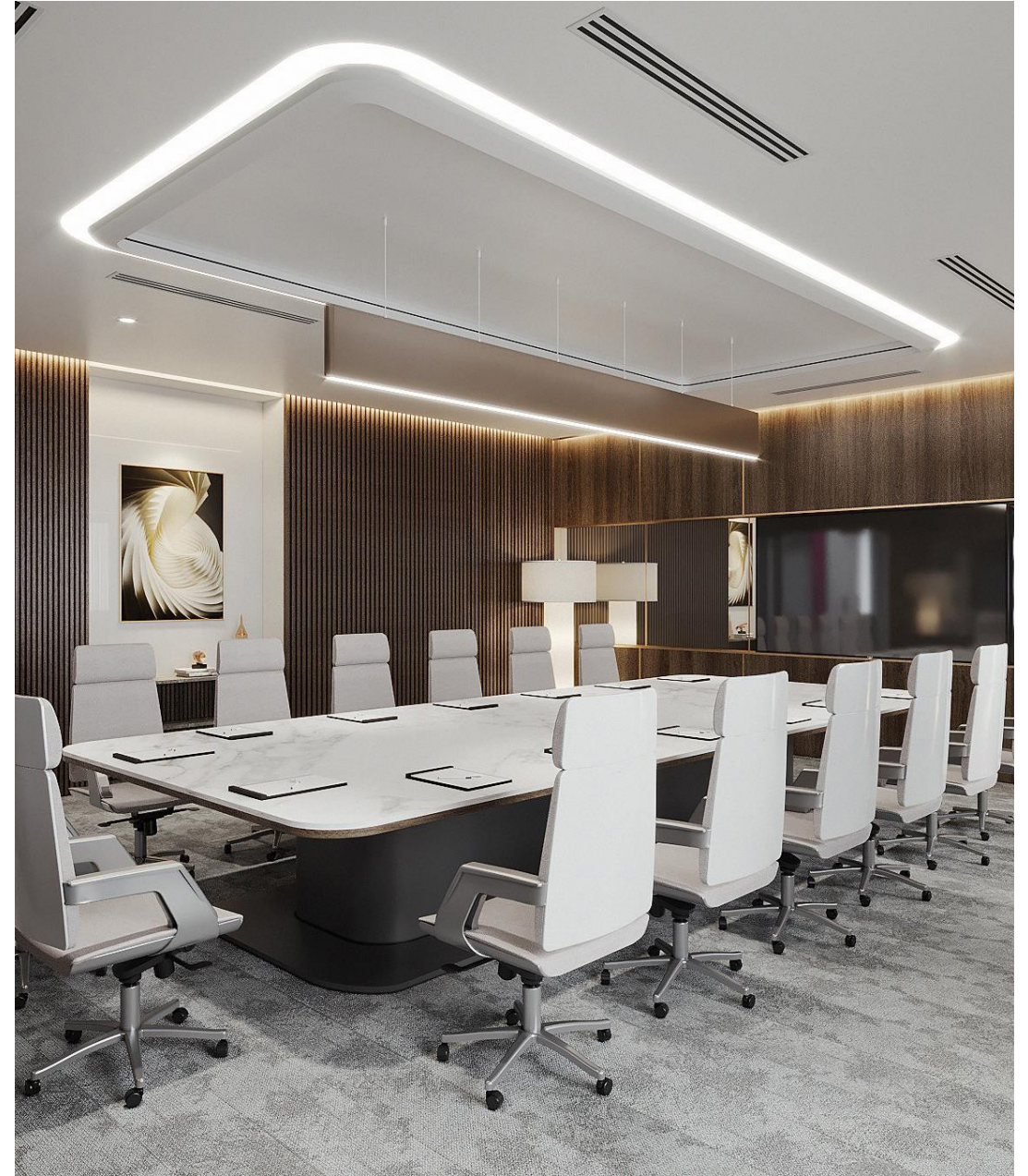
By proposing a carefully articulated design of modern look with premium materials at highly functional opening space, DBA Interiors was engaged to create the Headquarter office that well reflected the aspiration of Thien Huong Corporation as the leader in its filed.

Connecting and sharing spirit was promoted by the inclusion of a centrally located internal stair outstanding in bright red color. The space types and planning of the 1,800 square-meter area was based on a dynamic working model covering various needs including the degree of privacy, the focus of collaborative work with the formal settings. This working space and other supporting amenities were designed to enable all staffs to stay healthy and enrich better workplace performance.









AIA NEST HA NOI LOUNGE & OFFICE

Scope of Work: Design & Build

Client: AIA Viet Nam

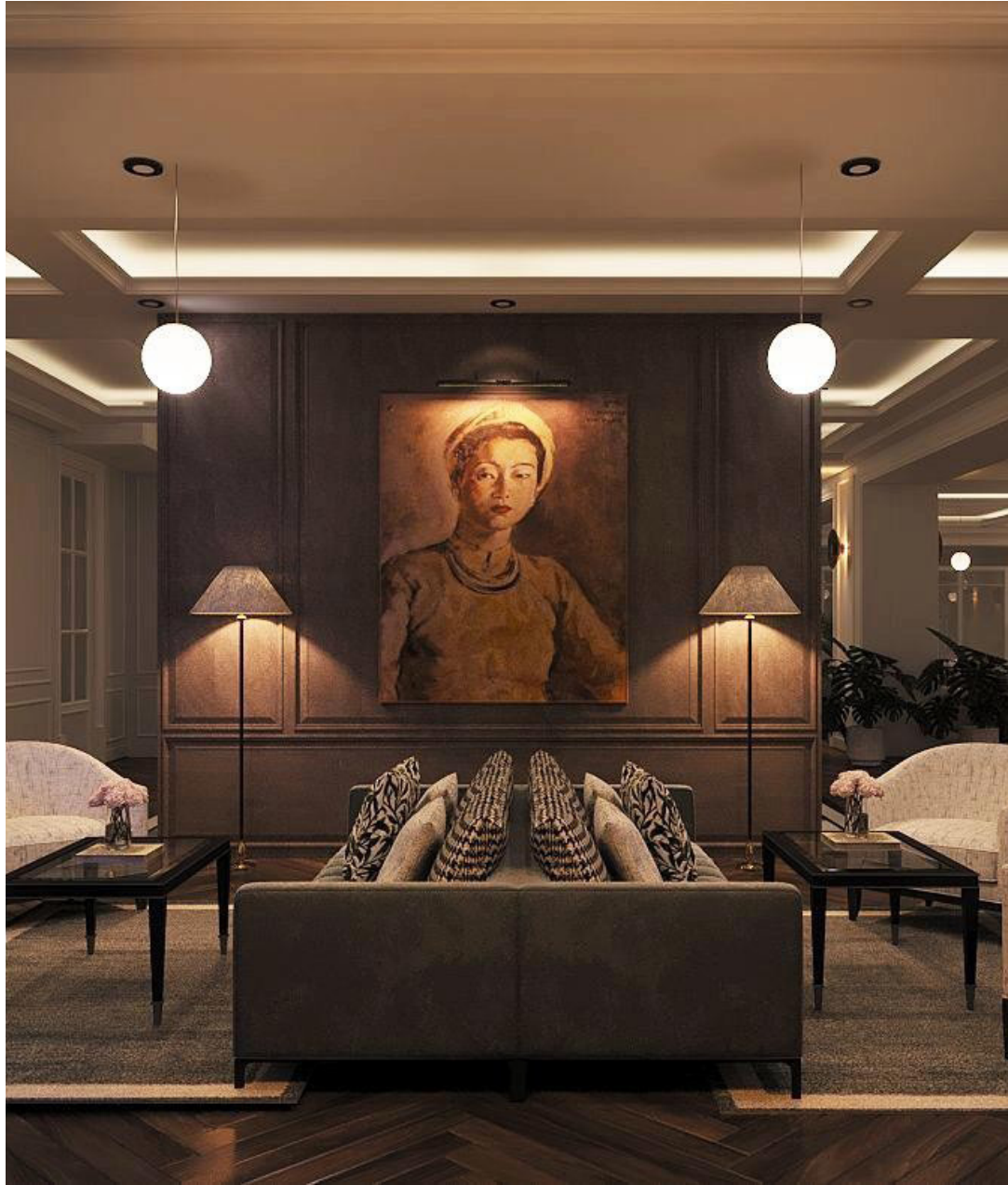
Location: Ha Noi

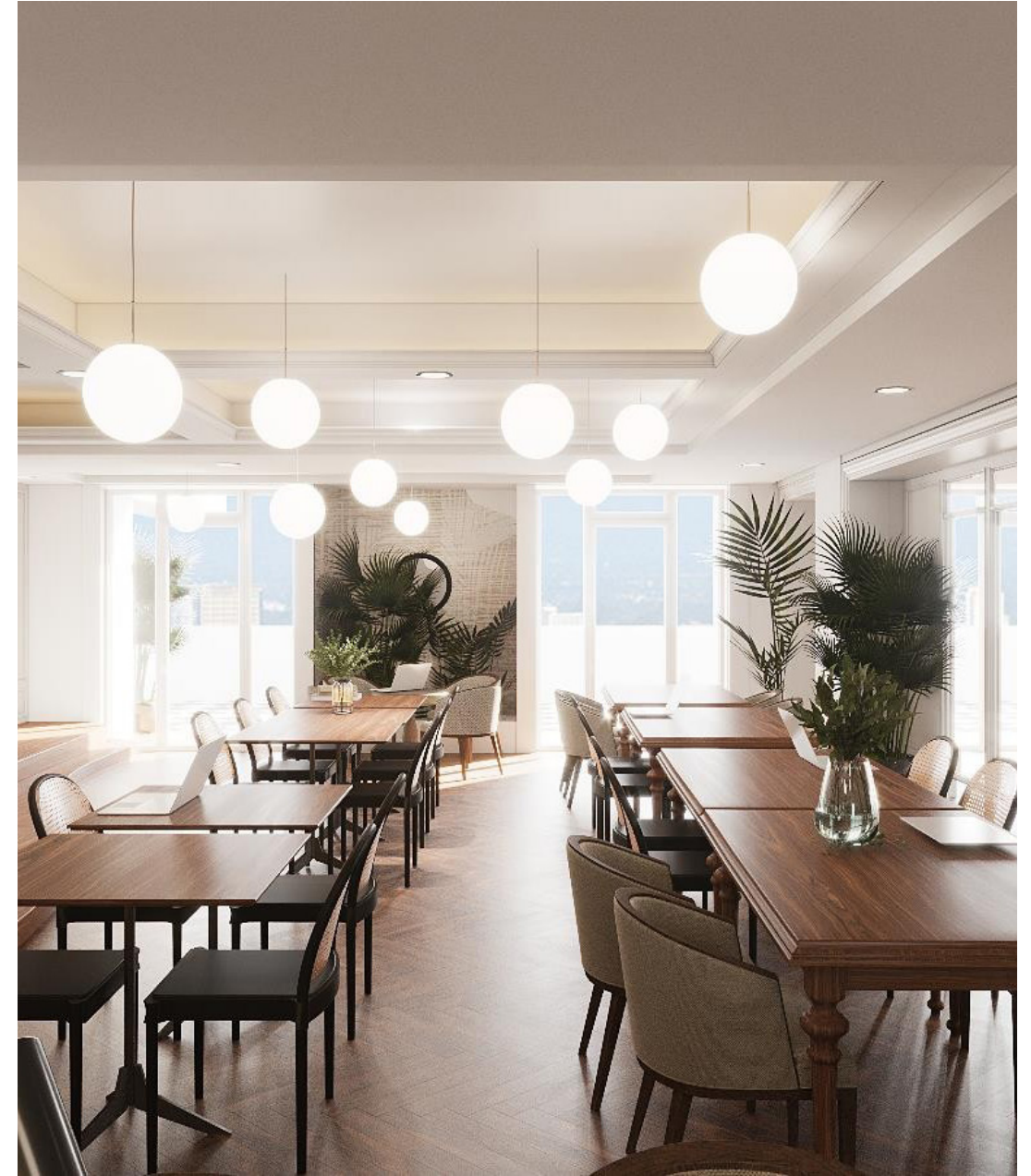
Completion Date: 2021

Located in Hanoi, the ancient capital of Vietnam, AIA Nest was expected to carry an elegant yet luxurious atmosphere in a unique way.

DBA Interiors took on this challenge by using the British Colonial style as the main inspiration to keep the classical mood, while creating a relaxing and chill impression for this 800 square-meter office. The core element of AIA Nest decor was the contrast of light and dark tones in which walls and outfitting windows were chosen with white or creamy beige color. As the major feature, timber floors were kept at dark tone together with sophisticated furnitures including oversize comfy sofas and rattan chairs. The outdoor area was filled with plenty of trees which brought a bold and fresh contrast to dark wood and white indoor.







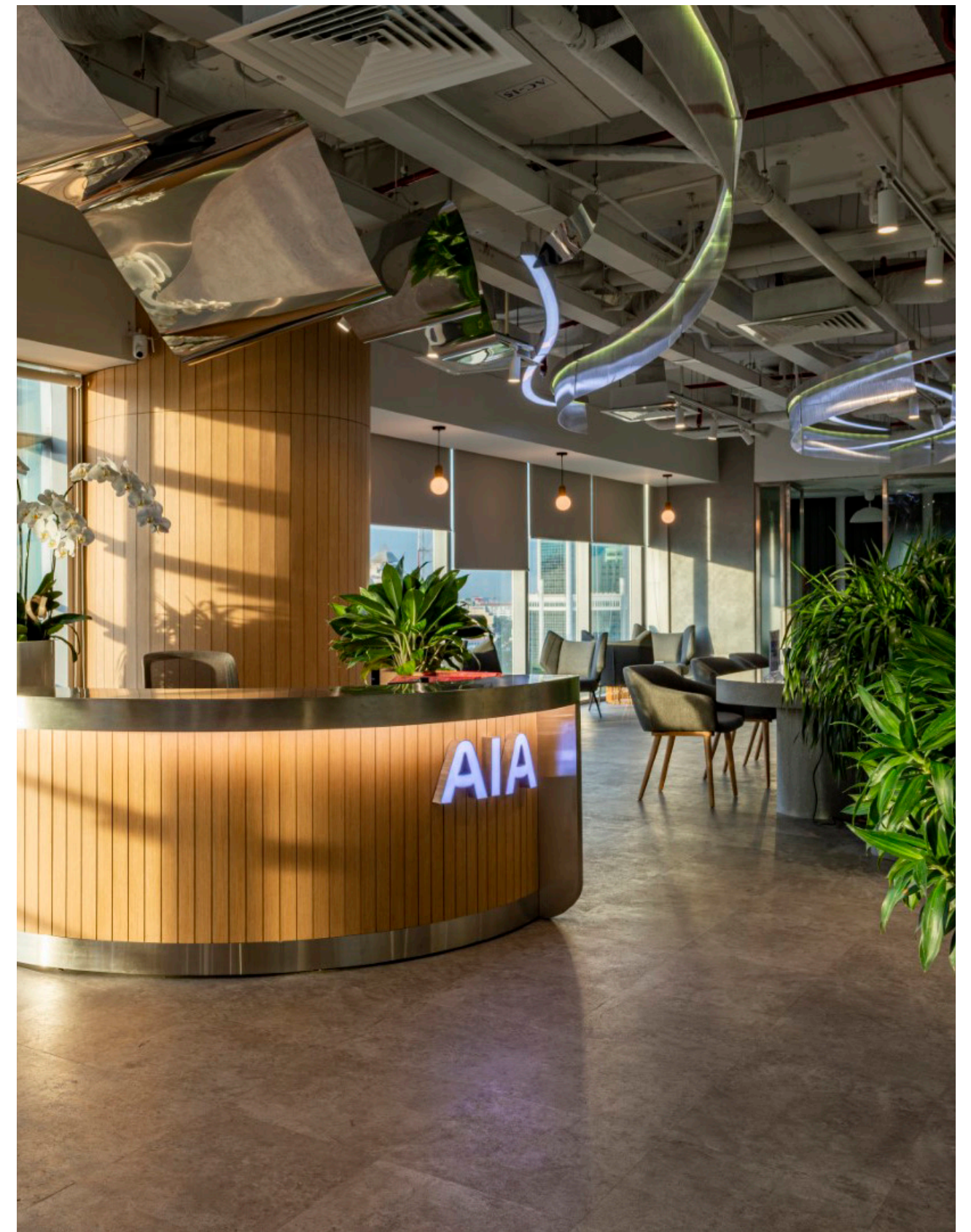


AIA EXCHANGE OFFICE

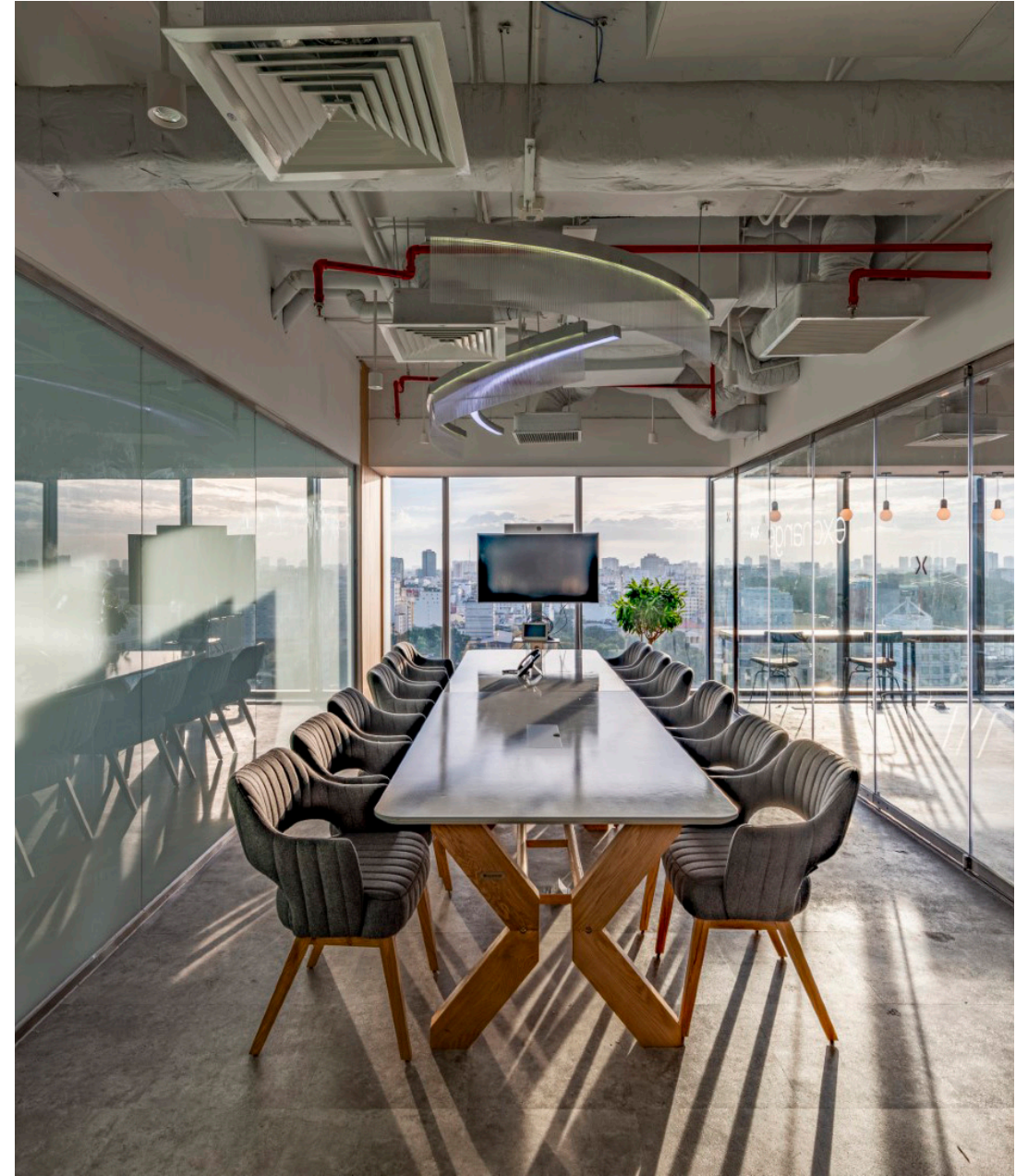
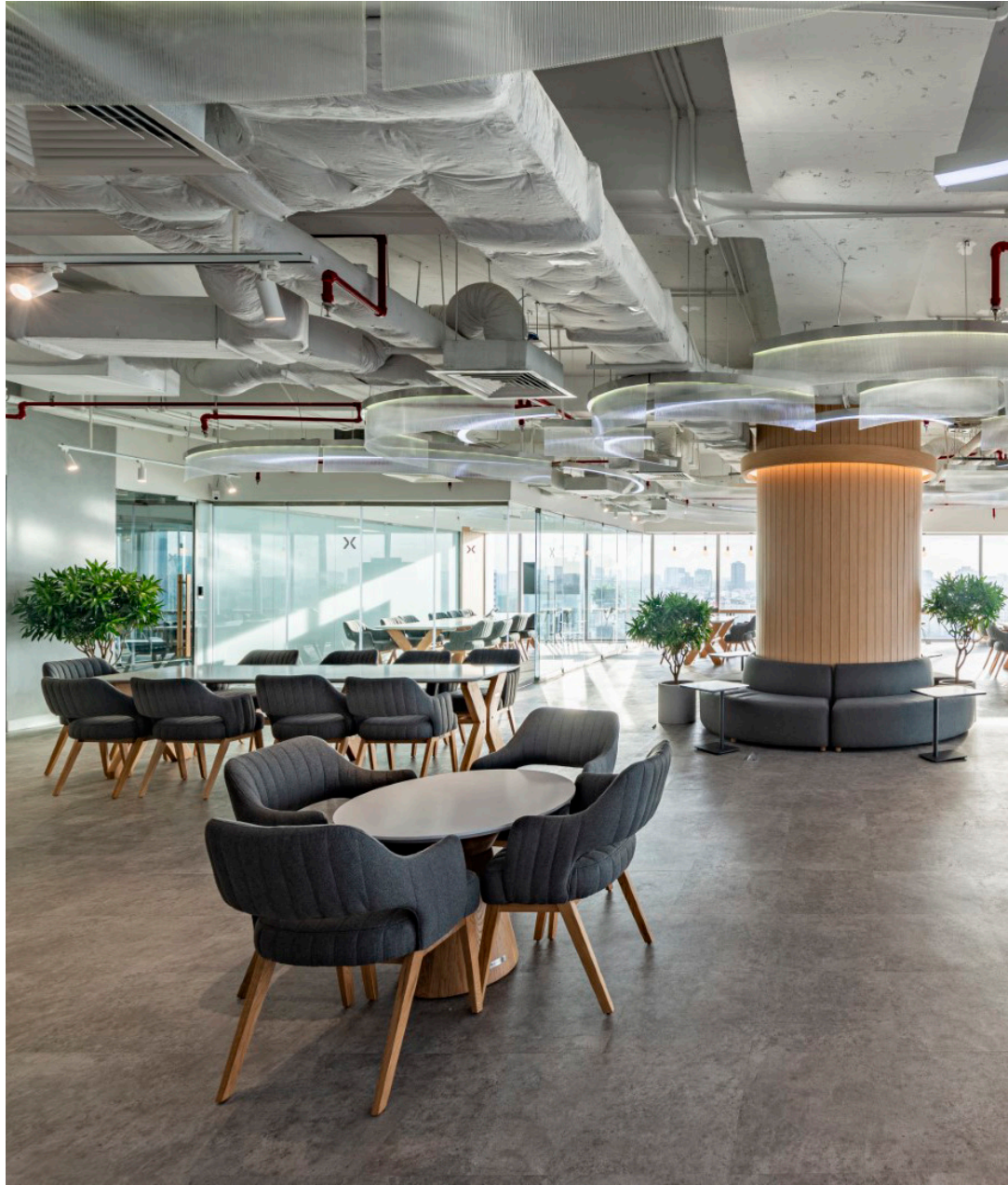
Scope of Work: Design & Build
Client: AIA Vietnam Life Insurance
Location: Ho Chi Minh City
Completion Date: 2020

Inspired by the New York financial center, AIA Exchange is a modern office model with the open space. The office spaces are covered by a clean palette of simply white. It's bright, serene, and fresh without feeling too stark; therefore allow people here to begin each day with a clear mind and positive energy. In addition to that, the rest of the floor is left in a fresh coat of light gray concrete that keeps the office light and bright.

Besides, the main working space is equipped with long LED lights that provide a necessary amount of brightness. In other sections such as greeting bench, downlights are used to give direct light distribution. Moreover, Abundant glass windows get utilized to become transparent walls that allow natural light to fill every corner of the room during the daytime that makes a great contribution to reducing the use of unessential equipment.









CAPITALAND VIETNAM OFFICE

Scope of Work: Design & Build

Client: CapitaLand

Location: Ho Chi Minh City

Completion Date: 2019

Inspired by modern style and the desire to bring about an extraordinary working environment, the office is divided into various parts with distinctive design.

The working space which covers a large area makes a strong impression through the modernity and functional interiors. Abundant glass windows get utilized to become transparent walls that allow natural light to fill every corner of the room during the daytime. Carpet in dark color adorned with neon patterns runs throughout the entire workspace providing an appealing surface which ties the parts together into an integrated whole. In this section, partitions made of wooden bars are used to divide space into smaller parts, ensure the need for privacy and connection.

The meeting room is designed in a different style in comparison to the previous area. Brown wood-like curves serve as a highlight decoration for the whole space, which combines with the lighting system to make an elegant vibe.

Last but not least, the waiting room, where functions as a place to welcome customers, is decorated with delicate and tender hue, creating a warm and inviting feeling. Besides, subtle interiors such as abstract painting, curved velvet sofa, and light curtains are equipped to highlight the elegant style of the design.







DBA INTERIORS OFFICE

Scope of Work: Design & Build

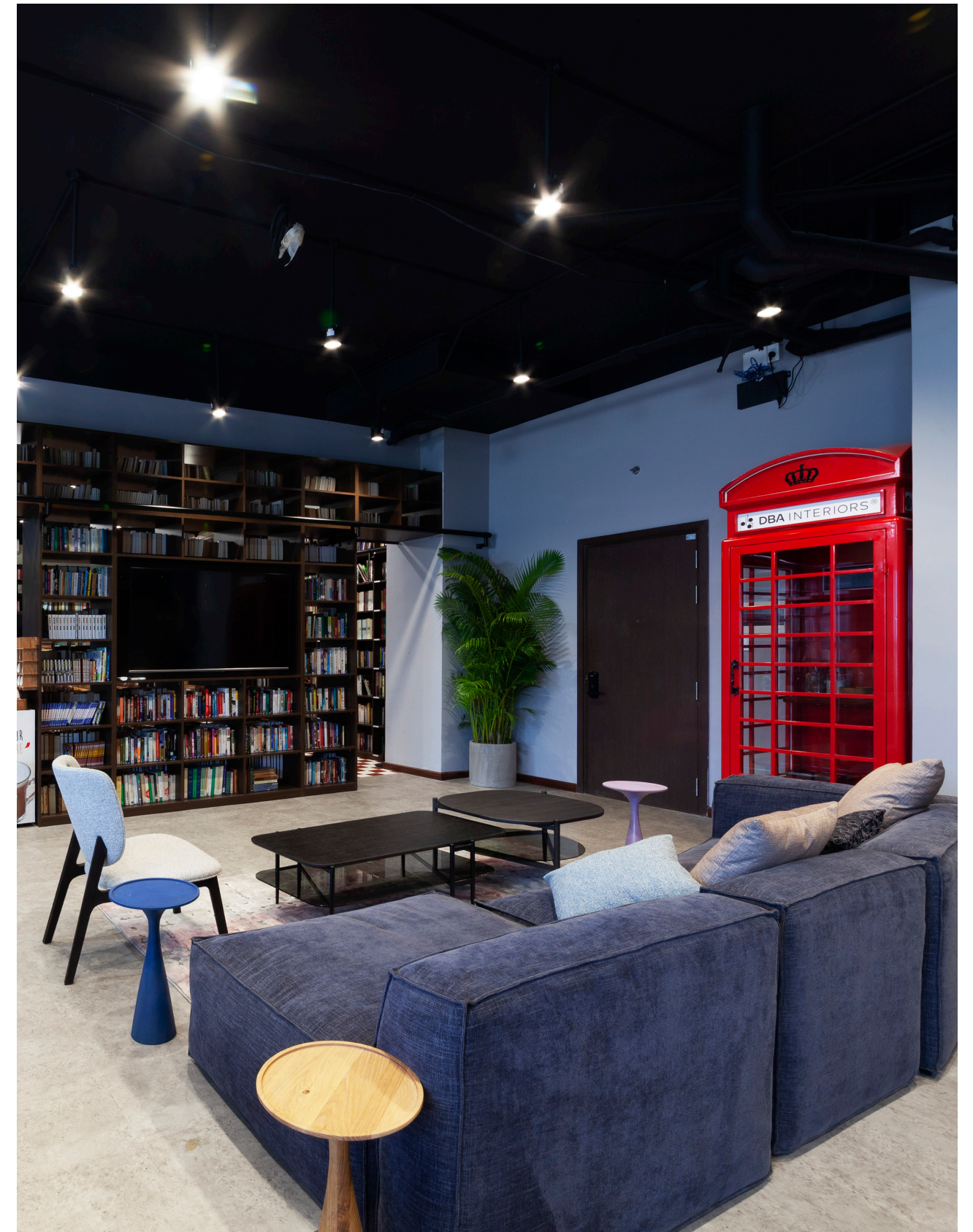
Client: DBA Interiors

Location: Ho Chi Minh City

Completion Date: 2020

With the contemporary look, the office is divided into various parts with distinctive designs. For instance, the meeting room is a perfect combination of dark blue carpet with the clean backdrop of the wall and the bold color of the ceiling. Contrary to the monochromatic of the meeting room, the space outside has an exclusive look thanks to the glass window which is opening toward the city view.

Besides, the black metal self-put together with the light brown wood wall serves an amazing factor that makes up the harmony for space. Each room is separate by a glass door making an open and connective environment, as well as providing rooms with natural light and view from the outer landscape.







ALPHA KING OFFICE

Scope of Work: Design and Build

Client: Alpha King

Location: Ho Chi Minh City

Completion Date: 2019

Alpha King's office is a typical example to illustrate the modern designing style which displays using minimal decoration and efficient use of materials.

Wood plays a significant role in highlighting this architecture since the adornment is minimalized to the lowest level. Wooden shelves, besides serve its original function, are utilized to cleverly hide the brick walls to make a special decoration. In addition to that, the whole floor in the working space is covered with high-quality wood, which creates an attractive look for the office. The subtle hue from this material helps provide a sense of warmth and elegance.

Another emphasis of this design is the practical application of the lighting system. Different kinds of bulbs are used depending on particular sections and the aims of using light. For instance, the main working space which requires a rich source of light is equipped with long LED lights that provide a necessary amount of brightness. In other sections such as meeting rooms or resting areas, downlights are used to give direct light distribution. Besides, the natural light from outdoor space coming through windows also make a great contribution to reducing the use of unessential equipment, which helps to economize the electricity.







LAZADA OFFICE

Scope of Work: Design & Build

Client: Lazada Group

Location: Ho Chi Minh City

Completion Date: 2017

Desire to create a friendly working environment that encourages creativity and connection between employers, the office's design is produced in the most functional and decorative approach.

Brilliant decoration is a special factor that makes up the first and foremost impression of the office. In order to put it into practice, a wide range of distinctive hues is utilized in embellishment, showing a vivid and inspirational spirit. More specifically, warm and cool colors, which remarkably go with walls and other decorative elements such as logos, making an attractive contrast to space. Along with it, there are other eye-catching decorations that are notable, such as a green corner, curvy stair, and stylish wavy bench.

While decoration fulfills the aesthetic purpose, interiors participate in completing the practical aspect of the design. Patterned carpet runs through the whole office giving an appealing surface that links the separate parts together as a whole. Besides, there is the use of glass as partitions to divide the office into smaller rooms, which ensures the connection between space. However, these transparent dividers still satisfy the demand for privacy since they are designed with blurred effect which acts as a subtle barrier for the inner space of each room.







THE ADDRESS NAM KY KHOI NGHIA

Scope of Work: Design & Build

Client: An Gia

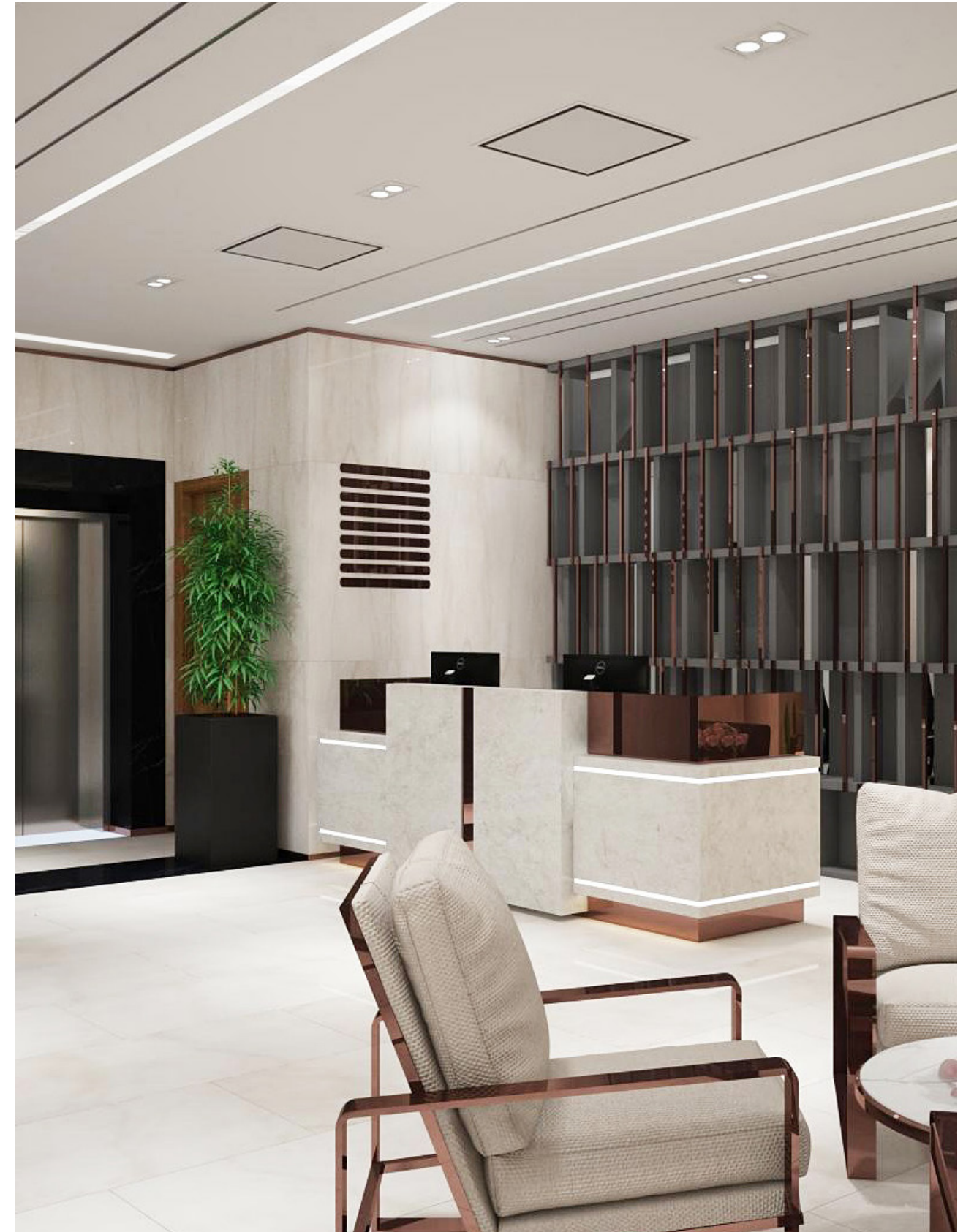
Location: Ho Chi Minh City

Completion Date: 2020

Modernity and elegance are the most appropriate terms that should be used to describe The Address's design.

The first and foremost impression of this office that must be mentioned is the delicate hue that covers the entire space. Neutral colors are used in embellishment to create a sense of elegance and classiness, which is revealed through furniture. The flow of delicate vibe spreads over the office thanks to the ivory floor, beige walls, and the arrangement of light grey armchairs and tables or black velvet sofa in the hall entrance. Besides, the stylish and minimalist design from furniture makes a great contribution to express the modernity of the whole architecture.

While fulfilling the aesthetic need, The Address's design yields to the practical demand as well. The interiors are utilized to not only serve decorative purposes but also maximize their function. The lighting system is adroitly hidden behind the ornamental patterns on the ceiling, making a unique embellishment for the office. In addition to that, there is the efficient usage of glass to function as partitions dividing space into smaller divisions such as meeting rooms, which ensures the need for connection and creates a welcoming and bright working environment.







THE ADDRESS NGUYEN TRAI

Scope of Work: Design & Build

Client: An Gia

Location: Ho Chi Minh City

Completion Date: 2020

The Address appears as an extraordinary design that is filled with the breath of classiness and luxury revealing through a subtle combination of furniture and interior.

Furniture, created with a unique style and rationally made of different kinds of material, is utilized to highlight the stylish and sophisticated atmosphere which initially draws observers' attention. This way of arrangement is displayed in the hall entrance where gets equipped with various eye-catching furniture such as high wooden shelves, chairs, and tables that are remarkably made with metallic details. They all together make an elegant and modern look for the whole office; besides, ensure both practical and aesthetic aspects of the design.

Another notable feature of this architecture that must be mentioned is the utilization of lighting systems and natural light. Cleverly hiding under decorative patterns on the ceiling, the lighting system not only serves its original function but also helps to show the delicateness of the design. Also, to provide inner space with extra brightness, glass is used as transparent partitions between outside and inside, which makes a fascinating connection to the outer space as well as allows natural light to fill in every corner of the office.







R&H

Residential & Hospitality

D-HOMME SALES GALLERY & SHOW UNITS

Scope of Work: Design & Build

Client: DHA Corporation

Location: Kinh Duong Vuong Street, District 6, Ho Chi Minh City

Completion Date: 2019

Modern and unexpected: these are the words that best describe this project. On a clean white or monochromatic background, the colors, shapes, patterns, and materials are maximized to be some not-so-little fun emphasis. The complementary color scheme is used the most, with no blending at all. They are just shapes of green-reddish orange, cool blue-warm yellow, and cool blue-warm red that are placed next to each other.

Besides that fun color pop style, unexpected curves, and abstract patterns are also a part of the party side by side with rough and straight edges. They present in the shapes of furniture, patterns of decorations, art pieces, and even in the design of tray ceilings. Although the textures of the materials used are mostly matte and velvety as a clean canvas for the pop of gold or marble here and there, they are also sometimes the star of the room filled with reflective materials.

Glancing through space, sometime the eyes will want to rest of some Eastern traditional patterns, objects (like the blue stairs or the lucky money tree), or the bold fun illustration, as they suddenly stand out on the clean modern background. Despite carrying all those fun elements, the designs do not let go of the elegance thanks to the right balance of use. This brings to the vibe of the design of edgy elegance.









GAMUDA SALES GALLERY

Scope of Work: Design & Build

Client: Gamuda Land

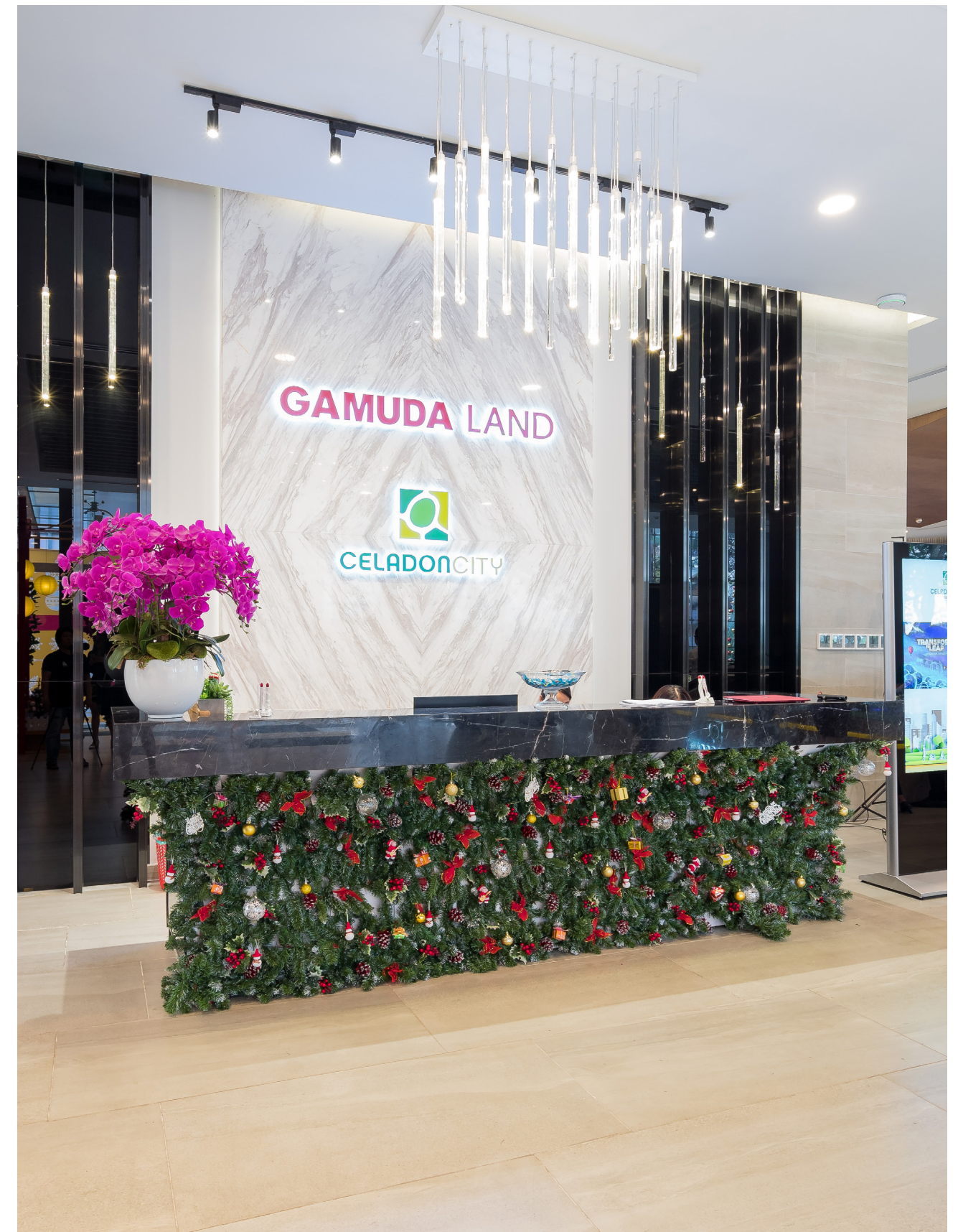
Location: Ho Chi Minh City

Completion Date: 2019

Bringing the best of both worlds together, this is a combination of classic Eastern Asia and the modern West in just one living zone. The distinctive elements of East Asian arts are integrated into the decorative patterns of bathroom utilities, decorative ornaments, and paintings. T

hese also present in the sliding doors, the folding screens separating areas in the house, and also in the warmth of lighting and color choice. The choice of materials sees a fusion of East and west, historic and modern through a combination of wood, marble, and golden metal. The main hall of the house consists of the lobby living room, dining room, and the kitchen, which are lighted up with lights thanks to the modern broad windows, the chandeliers, and the high ceiling.

At the same time, they are put together with Asian sliding doors and folding screens, which are somewhat modernized with clean single line ornaments and see-through design. A combination of straight lines and curves in furniture designs and decorations adds into the cultural integrating theme a sense of simplicity of modern style. The neutrals are chosen to be the canvas for muted pop of warm colors, as the simplicity of modern helps the elder historicals to shine.







VISTA VERDE PENTHOUSE

Scope of Work: Design & Build

Client: CapitaLand

Location: Ho Chi Minh City

Completion Date: 2020

Bringing the best of both worlds together, this is a combination of classic Eastern Asia and the modern West in just one living zone. The distinctive elements of East Asian arts are integrated into the decorative patterns of bathroom utilities, decorative ornaments, and paintings. These also present in the sliding doors, the folding screens separating areas in the house, and also in the warmth of lighting and color choice.

The choice of materials sees a fusion of East and west, historic and modern through a combination of wood, marble, and gold-en metal. The main hall of the house consists of the lobby living room, dining room, and the kitchen, which are lighted up with lights thanks to the modern broad windows, the chandeliers, and the high ceiling.

At the same time, they are put together with Asian sliding doors and folding screens, which are somewhat modernized with clean single line ornaments and see-through design. A combination of straight lines and curves in furniture designs and decorations adds into the cultural integrating theme a sense of simplicity of modern style. The neutrals are chosen to be the canvas for muted pop of warm colors, as the simplicity of modern helps the elder historicals to shine.





FELIZ EN VISTA BLOCK B

Scope of Work: Design & Build

Client: CapitaLand

Location: Ho Chi Minh City

Completion Date: 2020

Designed in a modern and elegant style, this architecture aims to bring about a refined as well as stylish living space.

White is used as the dominant hue for the whole apartment, which subtly creates the delicateness and modern look for space. To make a special emphasis on the decoration, various kinds of furniture with subtle colors are opted such as dark curtain, velvet stools, and sofa.

Another remarkable feature of this design is the practical use of different materials. The large area of the apartment is covered with high-quality wood, making an attractive contrast to the entire space. In addition to that, there is the usage of large glass to replace traditional brick walls, which allows natural light to fill in the living room as well as gives an amazing view from the outer environment.







DE LA SOL SALES GALLERY & SHOW UNITS

Scope of Work: Design & Build

Client: CapitaLand

Location: Ho Chi Minh City

Completion Date: 2018

Vintage presence in modern, and natural presence in an industrial domestic zone: these designs feel like the integration of everything in one. Dark green, shades of browns and warm lights, altogether, they recall to the house just every feeling of wandering in the jungle.

Their presence in leather screaming out, even more, the heart of wildness. The almost exposed designed ceiling used in the showroom and the randomness in lighting installation add a bit of fun and edginess. The huge wooden piece of modern art is the eye-hooking point in the main lobby.

Thus, placed into a dark background, the piece stands out even more. With the alluring and glittering effects thanks to the random placement of lights, the help of a highly reflective floor, and the golden curtain behind it, the piece leads visitors in a fantastic fairy jungle.

Stepping into the living zone, the designs feel softer and less wild, the color choice now feels more retro, which is enhanced by the choice of such materials like leather, wood, and velvet. However, they are not just all about historic elegant vibe; the randomness of placement, the clean and bold color blocks breath in a spirit of modern. Such a living zone like this blows into an industrial busy life a sense of freshness and relaxation.







GEM RIVERSIDE SALES GALLERY & SHOW UNITS

Scope of Work: Design & Build

Client: Dat Xanh Group

Location: Ho Chi Minh City

Completion Date: 2018

Calming summer sunset on a river: a natural cool analogous with an inner feeling of warmth, like a blanket covers over the whole place with a calming yet fresh and youthful look. The ceiling with adventurous curved cut-outs, slate patterns, and warm glowing lighting effects suggesting an image of a lusty and generous river flowing through space straight up to the edge of the horizon restlessly.

The green pieces of added plants are seamlessly blended into the lights and the warm backdrop, which helps create a harmonious combination between nature and the indoor zone. In addition to that, the floor is installed with highly reflective marbles with abstract wavy patterns; and there are rose-gold decorations here and there to add some edgy and elegant touches.

This results in the glittering and luminous effects in the light reflection, which turns the floor into a peaceful flowing river under a warm subtle atmosphere. On top of all is the use of matte blue pieces for balancing out the whole design and adding emphasis onto the beautiful backdrop. It also suggests a strong association with water that supports the flow of feelings in these projects, and also ties the elements together.







SWAN CITY CLUBHOUSE

Scope of Work: Design & Build

Client: CFLD

Location: Dong Nai

Completion Date: 2018

This project is inspired by swan with a tropical summer vibe. The show-room is designed with a welcoming openness towards nature through a large broad view window. The designs in overall follow a color pop style on a minimal bright backdrop.

A tall wooden slat ceiling with installed downlights helps balance out the brightness of the room, while the use of reflective materials like granites and marbles help reflect lights, brightening the whole space. The dark pieces of furniture are neatly put in, adding some emphasis on a white backdrop for the eyes to rest on.

The show units make use of warm wood and non-reflective materials as a clean canvas for pops of colors (like pastel cool blue, yellow, pink, etc) through pieces of furniture like chairs, carpets, pillows or even plants and wooden or velvet add-ins on the walls. For one of the dark background zones, the glowing lights installed from beneath the shelves are a highlight to look at.

The children's room is another zone with a dark background setting. This room has a playfulness use of a split complementary color scheme that still carries the summer vibe to match with the whole project. Overall, the whole space shows a fun summer vibe but still maintains a clean neat look.







RETAIL

YOLA HOANG TRONG MAU

Scope of Work: Design & Build

Client: YOLA

Location: Ho Chi Minh City

Completion Date: 2019

With a total built area of 1000 square meters, this complex consists of two separate yet attached parts: the main hall with simple and elegant design style, and the colorful, youthful studying space.

The main hall involving a large waiting area is decorated with white as the dominant color that provokes relaxation and comfort. To make it a little extraordinary there is the distinctive appearance of blue efficiently used for interiors and scattered squares on the ceiling. Large glass windows and doors are widely used to provide natural light as well as connect inner and outer space.

In contrast to hall design, the studying space is highlighted with extra colorful decoration and wooden interiors. Furniture with several colors is opted to make space more lively and eye-catching as a place for the youth. The low wooden fence serves as partitions between particular sections and corridor, creating an open and connective environment.

With the same aim of usage, glass is used as transparent dividers to separate classrooms from the corridor, establishing a close link between the divisions. However, it also makes sure of privacy since glass is decorated with bands of the stripe which serves as a barrier for the inner space.







YOLA LUY BAN BICH

Scope of Work: Design & Build

Client: YOLA

Location: Ho Chi Minh City

Completion Date: 2018

With simple and delicate design, Yola Luy Ban Bich provides a working and learning environment that yields to the aesthetic and practical demand.

Color is an outstanding feature that creates a powerful impression for the whole space. White and blue are efficiently combined to make a fascinating contrast, revealing a sense of elegance as well as youthfulness. Besides, the light brown from the interiors also serves as an amazing factor that makes up the highlights for space, bringing a feeling of trust and relief.

Besides color, wooden furniture and wood-like tiles play a significant role in facilitating the specialty of this architecture. This type of material radiates warmth and makes the spaces more inviting, which makes sense of its usage for the decoration of the pantry and waiting room.

Another modest yet subtle emphasis of this architecture is the arrangement of geometric patterns in embellishment. To make a strong impression for the lobby, a group of eye-catching geometrical design is decorated on the ceiling, creating an attractive feature to draw attention as well as set out a novel decorative detail. Likewise, the top surfaces of the pantry and waiting room get adorned with unique shapes, which adds an amazing look to space.





YOLA TRAN NAO

Scope of Work: Design & Build

Client: YOLA

Location: Ho Chi Minh City

Completion Date: 2019

Attempt to bring about an architectural environment for the youth, YOLA Tran Nao was designed with most of the effort put into providing a sense of activeness and modernity.

As usual, white and blue serve as dominant and symbolic colors for the whole structure. Nonetheless, they are used in a more novel way to withdraw the disinterest: give background for colorful hand-drawn pictures or color small yet lively wave patterns.

Along with the mentioned usage, these two hues also surprisingly play a significant role in widening space using visual effect. More specifically, in some classrooms, blue is used to paint half of the walls' height while the rest and ceiling are in white. As a result, it creates a visual illusion that space is vertically broadened, helping rooms to look more spacious and comfortable.

Last but not least, wooden interiors are utilized to make a significant highlight for the architecture. The extensive use of wooden furniture in conjunction with parquet and wood-look tiles create softness and welcoming spirit to observers. Besides, the bright tone from these interiors also emphasizes the modern look for this design as well as enhances the sense of elegance and friendliness.







YOLA HOA BINH

Scope of Work: Design & Build

Client: YOLA

Location: Ho Chi Minh City

Completion Date: 2019

With the practical use of modern style to design, Yola provides a fascinating architecture that displays not only modernity but also the delicate simplicity and high applicability.

To indicate the most considerable emphasis on this design, it must be how colors are used to highlight the inner space. White is utilized as the dominant hue for the overall structure, bringing relaxation and a state of relief. Meanwhile, blue plays as a special feature to make space more extraordinary. In classrooms, walls are painted in blue at half-height whilst the rest and ceiling are in white, helping to raise the height of the space.

For the sake of providing natural light, glass is applied as transparent barriers between the inner and outer space. This kind of material also takes place of brick walls to serve as partitions between classrooms, making space more open and connective.

The interiors used in decoration are details that make up the delicate and modern style for Yola's design. Naked lamps without any decorative elements are chosen to fit with the simplicity of the concept. Besides, there is the arrangement of some pots of plants for carrying green space as well as a sense of freshness to the room.





YOLA BINH TAN

Scope of Work: Design & Build

Client: YOLA

Location: Ho Chi Minh City

Completion Date: 2018

Designed in a simple yet impressive way, Yola Binh Tan draws observers' attention by its attractive combination of colors, interior and architecture.

Since colors are the factors that make the first impression on vision, they are used differently in terms of decoration for each section. The lobby whose function is to welcome customers makes an attractive look through the notable blue. Meanwhile, the classrooms and common rooms are primarily painted in white as they are the place for concentration and relaxation.

The wooden interiors play an important role in specifying the design of Yola Binh Tan as well. Along with furniture, the usage of this organic material in small details such as door frames or staircase railing makes it a subtle highlight and appeals to observers' eyes.

Last but not least, other types of the interior are efficiently used to complete the aesthetic and functional aspects of this design. Several minimalist naked lamps on the ceiling in conjunction with geometric patterns in the lobby give space a unique look. In addition to that, the glass partitions between classrooms and corridors establish a spatial connection, yet ensure privacy thanks to the stripe patterns adorned on their surface.





VUS KIDS TRAN NAO

Scope of Work: Design & Build

Client: VUS

Location: Ho Chi Minh City

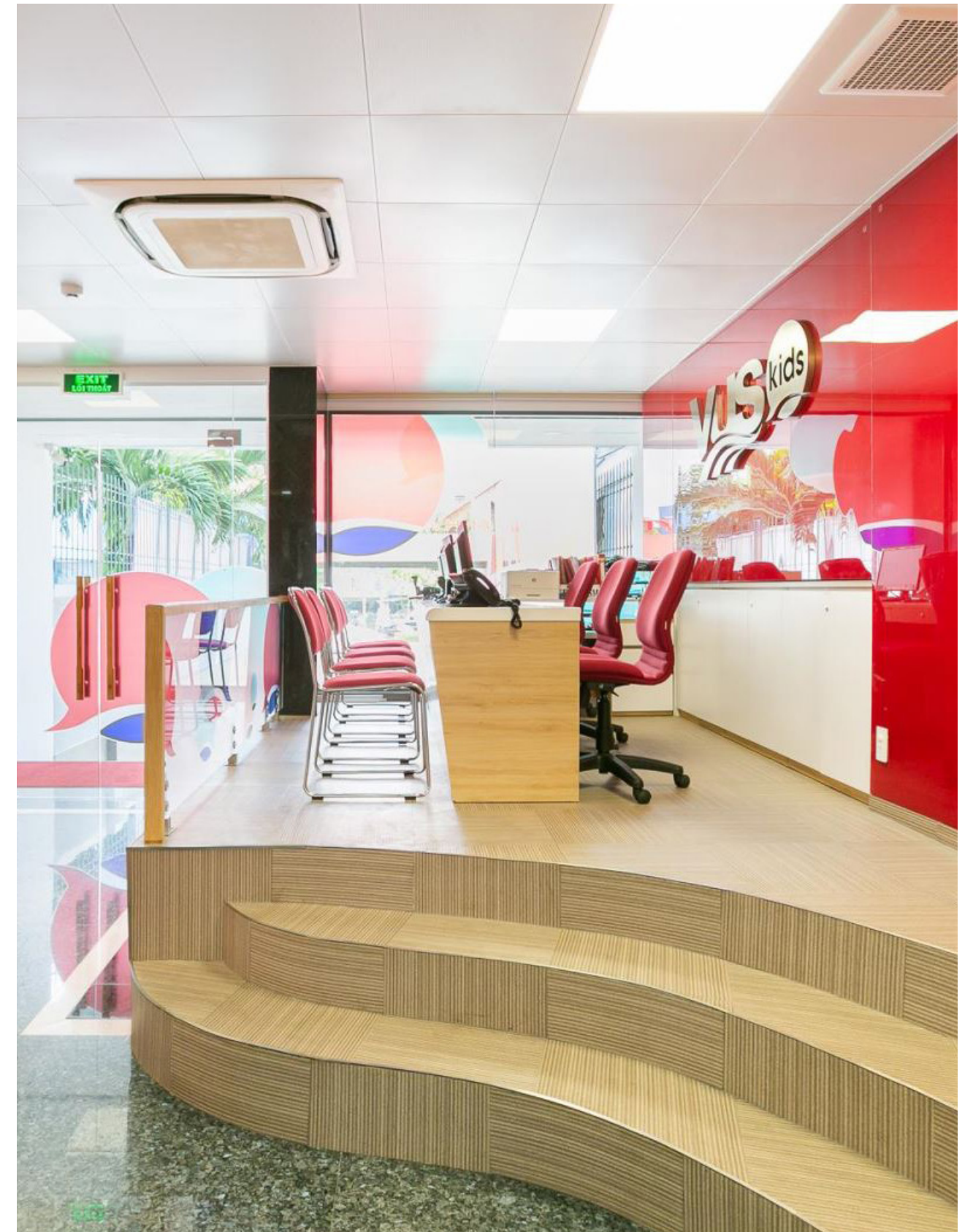
Completion Date: 2018

With the idea of building an engaging learning environment using architecture, VUS Tran Nao is designed to provide a perfect combination of functional interiors and attractive decoration.

Furniture is the feature chosen carefully to ensure that they are appropriate for the concept of every single section. Swivel chairs and chairs in impressive red are arranged in the reception desk, which is effectively identical to the dominant hue of this area. Meanwhile, classrooms, where the learning process of children is taken place, get equipped with colorful chairs and tables to make a lively scene.

Functioned as a part for relaxation, the common room is furnished with light-colored furniture that is made of wood. This kind of material enhances the sense of relief and creates tenderness for space, making it an ideal place for resting and recreation.

Other types of interiors are applied to fulfill the aim of providing a functional design. The low walls made of glass or wood serve as special partitions to divide space into particular parts, ensuring the need for separate but connective areas. Besides, glass doors and windows also play important roles in the architecture since they help to provide inner space with natural light.







OUR BELOVED

OUR BELOVED BRAND



WOUDsense®
finest furniture made in vietnam

WHO WE ARE

We are Woudsense, a Saigon-based furniture firm with a passion for offering hand-crafted furniture influenced by modern and contemporary movements. Rooted in a tropical country, where energy and enthusiasm runs in our veins, we seek to infuse Vietnamese's sense of dynamism and optimism in each and every single work. Inspired from the blending cultures between the east sky and the west wind, we use woud(wood) the original material from nature to craft good quality furniture with youthful spirit in mind that people would feel with all senses. Woudsense furniture is designed in-house by our European design team and manufactured by the skillful hands of our Vietnamese workmen. This fusion of international designs, local knowhow workmanship, and a deep-rooted passion for wood enable us to produce high-quality furniture that can meet the export standards of the USA, Europe, Japan, Korea, and Taiwan.

VIETNAMESE CRAFTSMANSHIP

The craftsmanship culture, which is the core at Woudsense's business, is the sincere love for well-designed products, meticulously made with dedication and passion. The craftsmanship that Woudsense emphasizes on is paying attention to details and caring to every tiny aspect of a product.

DESIGN WITH PASSION

As a design-driven company, we are dedicated to creating furniture that is optimal in function and aesthetic in detail. With a strong sense of the latest trends and of lifestyle, we offer contemporary furniture that is youthful in spirits, unique in styles, and elegant in designs. Our knowledge and passion about wood is as deep as our roots in Vietnam. Our solid wood are strong and ages incredibly well with time, while our rich materials make Woudsense's designs associate well with different styles but still maintain a strong and clear identity.

OUR FACTORY

Every process of manufacturing takes place in a 4,200 sqm factory just one hour away from Woudsense design office. Flooded with tropical sunlight all year round, the factory is an open space buzzing with activities with more than 128 qualified staff. Producing 10-15 cont. of capacity per month, our know-how staff continue to create high-quality products with their small but meticulous hands.

MADE IN VIETNAM

We are proud that our well-designed products are 100% R&D and made in Vietnam. Every process of manufacturing takes place in a 4200sqm factory just one hour away from the Woudsense design office. Flooded with tropical sunlight all year round, the factory is an open space buzzing with activities with more than 128 qualified staff. There, our craft-people continue to master their skilled work: wood-working, frame-making, upholstery, cutting, and sewing.







the sun avenue building, tower S5, 28 mai chi tho street, district 2, hcmc
dba.com.vn | +84 901 336 922 | bizdevelopment@dba.com.vn



design office: 109 bui ta han st., an phu ward, dis. 2, hcmc
factory: binh khanh quarter, khanh binh ward, binh duong province
woudsense.com | +84 908 834 012 | infor@woudsense.com